

Carbon Reduction Plan

Supplier name: ...Involve Visual Collaboration Ltd

Publication date: ...8th January 2026.....

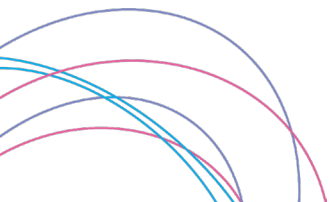
Commitment to achieving Net Zero

Involve Visual Collaboration Ltd is committed to achieving Net Zero emissions by 2050.

Baseline Emissions Footprint

Baseline emissions are a record of the greenhouse gases that have been produced in the past and were produced prior to the introduction of any strategies to reduce emissions. Baseline emissions are the reference point against which emissions reduction can be measured.

Baseline Year: 2022	
Additional Details relating to the Baseline Emissions calculations.	
Baseline reporting of our carbon footprint of Involve commenced in 2022 when embarking on obtaining our ISO 14001 certification. We currently report on Scope 1, 2 and 3 emissions.	
Baseline year emissions:	
EMISSIONS	TOTAL (tCO₂e)
Scope 1	133 Business miles from our fleet of vehicles used by our engineering resource
Scope 2	40 Energy usage – electricity and heating
Scope 3 (Included Sources)	70 Business miles travelled for business and commuting



Total Emissions	243
------------------------	------------

Current Emissions Reporting

Reporting Year: 2024	
EMISSIONS	TOTAL (tCO ₂ e)
Scope 1	173 Business miles from our fleet of vehicles used by our engineering resource
Scope 2	39 Energy usage – electricity and heating
Scope 3 (Included Sources)	43 Total business miles travelled for business and commuting
Total Emissions	255

Emissions reduction targets

In order to continue our progress to achieving Net Zero, we have adopted the following carbon reduction targets over the next 12 months to reduce the total tCO₂e detailed above.

- Travel by our engineering resource – 1% reduction
- Travel by our warehouse resource – 3% reduction
- Gas – 5% reduction
- Electricity – 5%



We also aim to further reduce our carbon footprint by adopting the targets below:-

Waste management – general waste 5% reduction

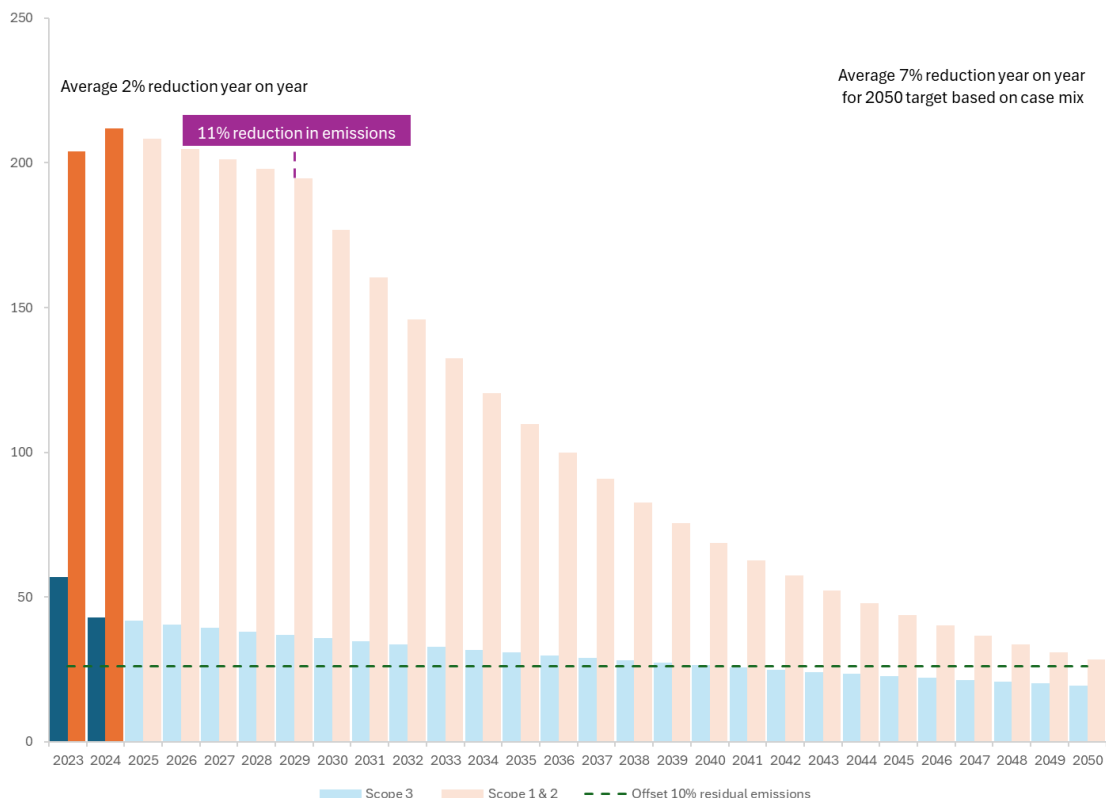
Printing – 10% reduction

Water – 5%

Packaging - 5%

We project that carbon emissions will decrease over the next five years to 235 tCO₂e by 2029. This is a reduction of 11%.

Progress against these targets can be seen in the graph below:

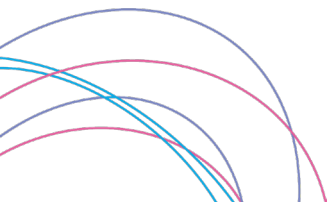


Carbon Reduction Projects

Completed Carbon Reduction Initiatives

The following environmental management measures and projects have been completed or implemented since the 2022 baseline. In 2024, there has been a 3.04% reduction in our emissions from 2023.

- ISO 14001 certification obtained in February 2023 ensuring continual improvement of our management system and effective monitoring of our environmental performance.



- Considering the whole life cycle of an AV project, our attention to sustainability starts with the design process, our understanding of the products available, their compatibility with other components that may form a complete system, the environmental benefits to our end users and ultimately to the planet. Our solutions are designed to include energy efficiency equipment where possible and our system designs include programming auto system shut down times for evening/weekends.
- Audits of existing AV stock, exploring innovative ways to extend product lifespan, using eco modes and partnering with recycling and WEEE facilities to ensure responsible end-of-life management.
- Full refurbishment of our head office premises working with an environmentally conscious interior design company. This refurbishment has included improvements such as more energy and water efficient fixtures and fittings.
- LED lighting installed throughout head office and our warehouse facility.
- New company vehicles are required to be fully electric or hybrid.
- Any vehicles purchased by staff via a vehicle allowance scheme are encouraged to be electric or hybrid vehicles.
- It is not currently viable for our engineering team to have fully electric vehicles however Involve have invested in a brand new fleet of vans with improved emissions.
- Upgrades to our heating system to ensure a reduction in energy usage by the installation of a new heating control panel and exterior sensor to monitor temperatures and timings and new heating controls fitted to each radiator in the building.
- New electric heaters installed at the warehouse with built in temperature controls to ensure they cannot be left on.
- Selection of a waste management provider who ensure that 0% of our waste generated at either head office or our warehouse goes to landfill. This is monitored via performance measurement with the provider.
- Sourcing of more environmentally friendly packaging with re-use of packaging where possible.
- Optimising supply chain logistics and engaging with our distribution channels wherever hardware is required by arranging direct deliveries to project sites whenever feasible. This approach eliminates unnecessary transportation to our warehouse, minimising the number of deliveries each project requires.
- Conscious scheduling of our engineering resource to minimise distance travelled for installations and support.
- Provision of video equipment to our British Sign Language team and the creation of a Green Room at our head office to ensure minimal travel to provide our BSL services to our customers.
- Mandatory environmental awareness training for all employees with regular refresher training courses undertaken.

Implementation of the measures above will continue and our ISO 14001 Environmental Management System will maintain our focus and allow us to continually improve our environmental performance.

We will offset any residual emissions and any greenhouse gas emissions released into the atmosphere through recognised carbon offsetting schemes.

Involve are affiliated with the Institute of Sustainability and Environmental Professionals (ISEP).

Declaration and Sign Off

This Carbon Reduction Plan has been completed in accordance with PPN 06/21 and associated guidance and reporting standard for Carbon Reduction Plans.

Emissions have been reported and recorded in accordance with the published reporting standard for Carbon Reduction Plans and the GHG Reporting Protocol corporate standard¹ and uses the appropriate Government emission conversion factors for greenhouse gas company reporting².

Scope 1 and Scope 2 emissions have been reported in accordance with SECR requirements, and the required subset of Scope 3 emissions have been reported in accordance with the published reporting standard for Carbon Reduction Plans and the Corporate Value Chain (Scope 3) Standard³.

This Carbon Reduction Plan has been reviewed and signed off by the board of directors.

Signed on behalf of the Supplier:



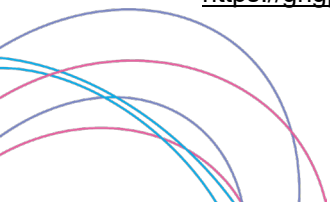
.....
Rob Pasqualino
Managing Director

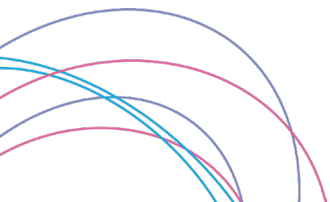
Date: 08/01/2026

¹<https://ghgprotocol.org/corporate-standard>

²<https://www.gov.uk/government/collections/government-conversion-factors-for-company-reporting>

³<https://ghgprotocol.org/standards/scope-3-standard>





GEN-FAT-93-2.0

Controlled

t: 0330 088 3475
e: hello@involve.vc
w: www.involve.vc